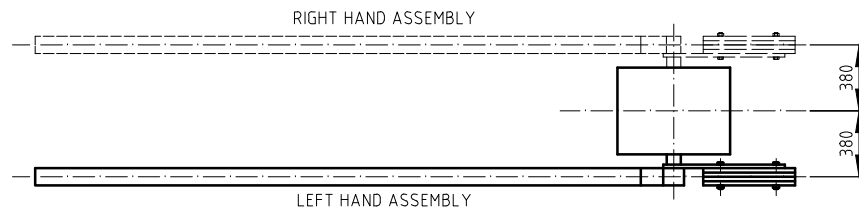
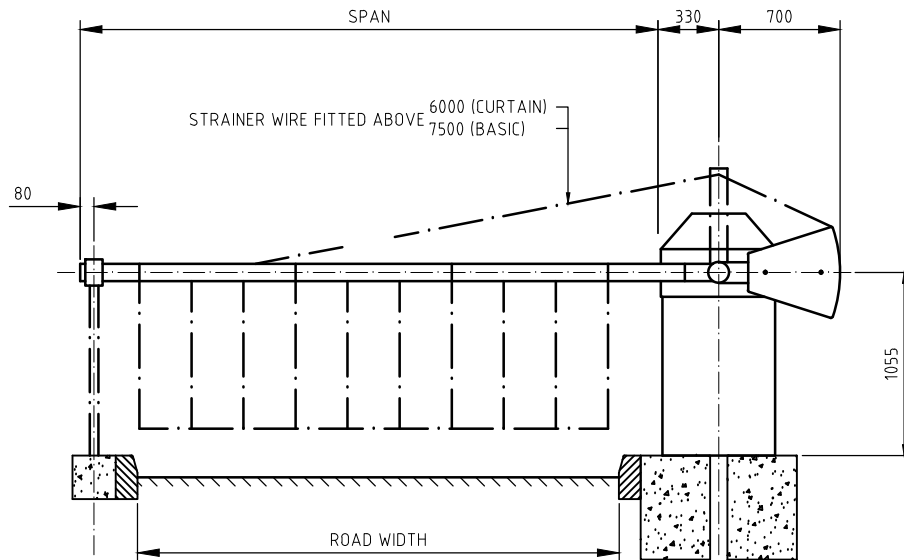


HEAVY DUTY
 SPAN - SEE CONTRACT SPEC
 HANDING - SEE CONTRACT SPEC
 OPTIONAL EXTRAS:-
 BOOM LIGHTS
 PLAIN STOP SIGN
 ILLUM. STOP SIGN

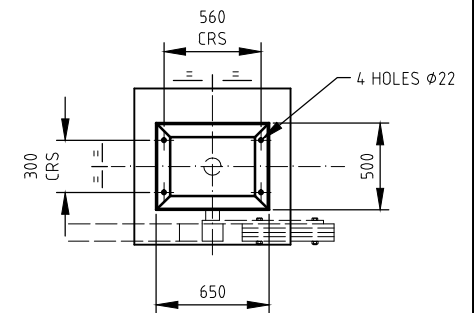
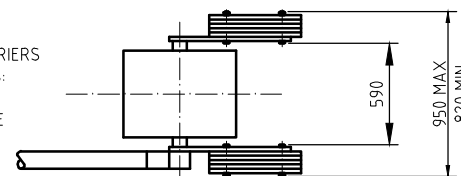
TECHNICAL DATA
 PEDESTAL - 1395 x 655 x 510
 DRIVE - ELECTRO MECHANICAL
 (HYDRAULICS OPTIONAL)
 OPERATING TIME - 8 / 10 SECS
 CONTROLS TO SUIT REQUIREMENTS
 MANUAL OVERRIDE AS STANDARD
 WEIGHT - 200 kgs (BARRIER ONLY)
 FIXING BY EXPANSION BOLTS (20mm)

ELECTRICAL SPECIFICATION :

Voltage (V) : 230
 Frequency (Hz) : 50
 Load Current (A) : 6
 Rating (Kw) : 0.37

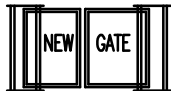


DETAIL SHOWS L.H. ASSY & CLEARANCES FOR BARRIERS
 FITTED WITH DOUBLE SIDED BALANCE WEIGHTS:
 WITH CURTAINS - SPANS OF 6.9m & ABOVE
 WITHOUT CURTAINS - SPANS OF 8.0m & ABOVE



SECTION A-A
 BARRIER FIXING DETAIL

THIS DRAWING REMAINS OUR
 PROPERTY & MAY NOT BE COPIED
 OR PASSED TO A THIRD PARTY
 WITHOUT OUR WRITTEN CONSENT



NEWGATE(Newark)LTD
 BRUNEL DRIVE, NEWARK, NOTTS, NG24 2DE
 TELEPHONE: (01630) 700172 & 704000
 FAX: (01630) 605400

IF IN
 DOUBT -
 STOP -
 ASK !

Issue	Date	Mod.no	Description	Drawn By	Ref.no.	Qnt.	Part name	Material	Dimension	Remark
							Outline H.D. BARRIER C/W CURTAIN			
	04/92			AB						Drawing no. 104/3/10882