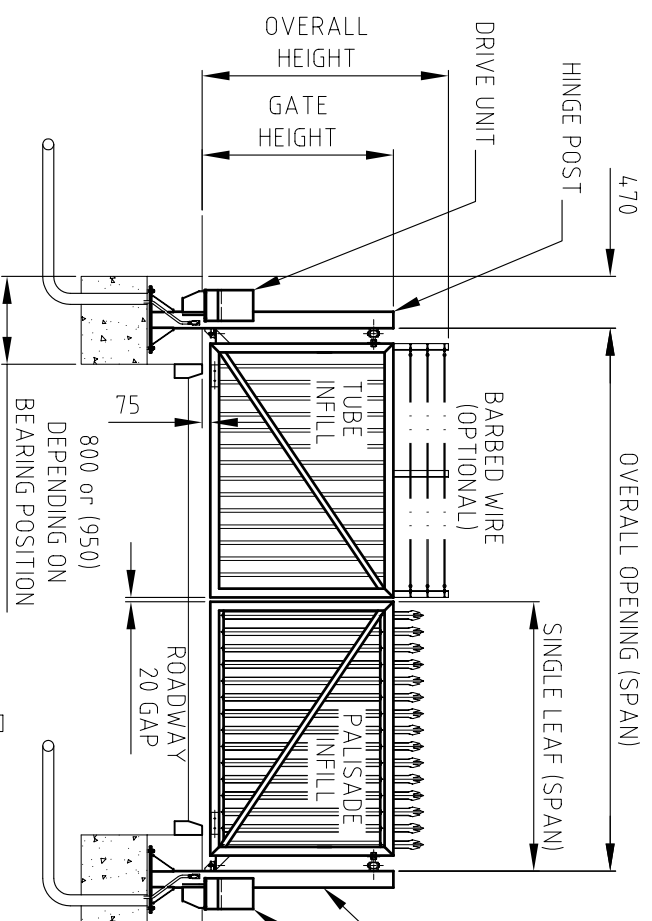
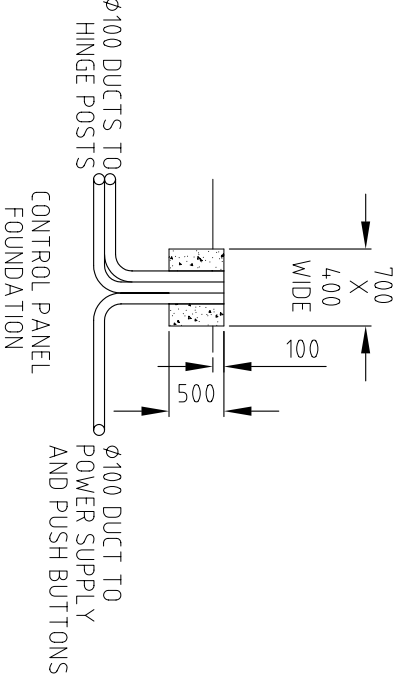
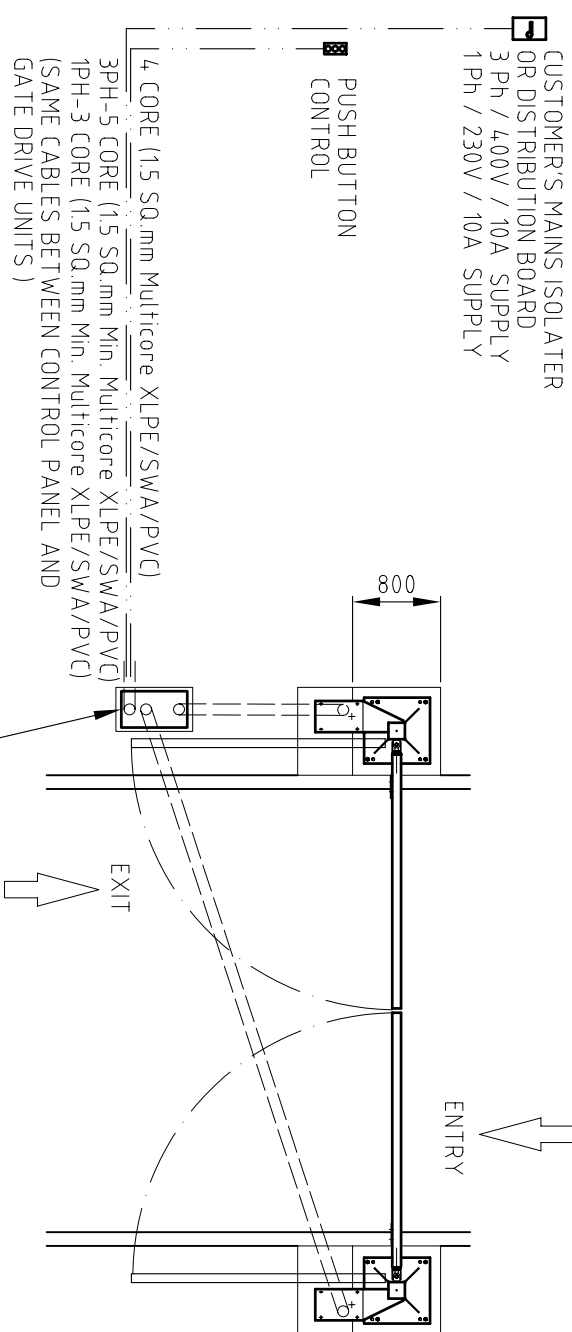
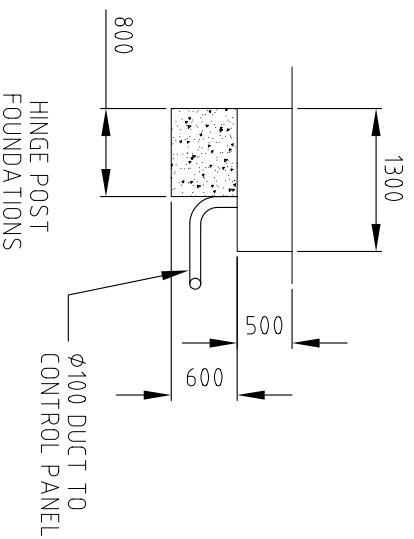


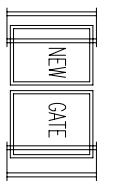
**INFILL OPTIONS:-**  
 TUBE BAR, MESH,  
 PALISADE, ETC.  
**DRIVE UNITS:-**  
 THE FOUNDATIONS SHOWN FOR  
 THE HINGE POSTS ARE SUITABLE  
 FOR BOTH THE DSG81 AND THE  
 DSG101 DRIVE UNITS.



**NOTE:**  
 ALL CONCRETE FOUNDATIONS TO BE GRADE C32/4.0 20mm  
 GRAVEL AND CAST A MINIMUM OF 7 DAYS BEFORE THE  
 EQUIPMENT IS INSTALLED. THEY MUST ALSO BE FLAT AND LEVEL.  
 HINGE POST FOUNDATIONS MUST BE LEVEL WITH EACH OTHER.  
 BACKFILL BOTH POST FOUNDATIONS WITH CONCRETE AFTER  
 INSTALLATION OF EQUIPMENT.



THIS DRAWING REMAINS OUR  
 PROPERTY & MAY NOT BE COPIED  
 OR PASSED TO A THIRD PARTY  
 WITHOUT OUR WRITTEN CONSENT



NEWGATE(Network)LTD  
 BRUNEL DRIVE, NEWARK, NOTTS NG24 2QE  
 TEL: 01529 232323  
 FAX: 01529 605400

IF IN  
 DOUBT -  
 STOP -  
 ASK !

Issue	Date	Mod no.	Description	Drawn By	Ref. no.	Ant.	Part name	Material	Dimension	Remark
B	25/01/07		DRAWING UPDATED TO LATEST SPECIFICATIONS	SRM						
<b>THE OUTLINE AND FOUNDATIONS PAIR SWING GATES</b> Date: 25/1/00 Drawn by: MC Scale: 1:50 Drawing no.: 107/3/17322										