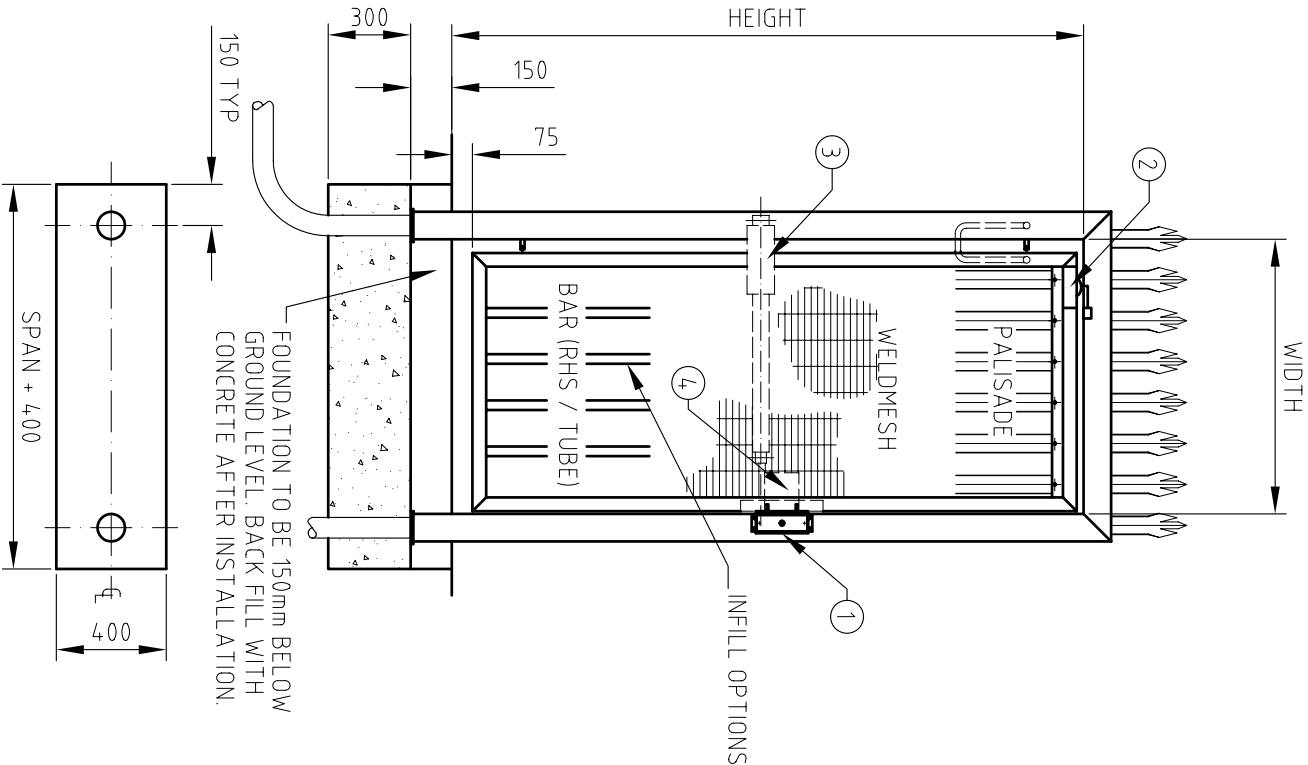


Ø75 DUCT
DIRECTION TO SUIT SITE
(BOTH SIDES IF REQUIRED)



PED GATE

HEIGHT TO SUIT CONTRACT (STANDARD = 2000mm)
WIDTH TO SUIT CONTRACT (STANDARD = 1000mm)

ELECTRO/MAGNETIC LOCK (STD) - ITEM No 1
SELF CLOSER (STD) - ITEM No 2

NON STANDARD PEDESTRIAN GATE CAN BE
SURFACE MOUNTED AT SPECIAL REQUEST

INFILL OPTIONS (SIZES TO SUIT CONTRACT) :-
BAR (RHS / TUBE)
WELDMESH

BAR / WELDMESH COMBINATION
PALISADE

OPTIONAL EXTRAS

ELECTRO/HYDRAULIC OPERATOR - ITEM No 3
ELECTRO/MECHANICAL CISA LOCK - ITEM No 4

MANUAL (NO ELECS)
CARD READERS
INTERCOM SYSTEMS

BARBED WIRE / CAPPING
FINISH TO SUIT CONTRACT

FOUNDATIONS

CONCRETE TO BE GRADE C32/40 20mm
GRAVEL AND CAST A MINIMUM OF 7 DAYS
BEFORE INSTALLATION OF THE GATE.
FOUNDATION BASE TO BE FLAT AND LEVEL.

TYPICAL ELECTRICAL DETAILS

MAGLOCK 24 V.D.C 480mA
CISA LOCK 12 V.A.C 1-25A
FAAC RAM CONTROLLER 230 V.A.C 1A

THIS DRAWING REMAINS OUR
PROPERTY & MAY NOT BE COPIED
OR PASSED TO A THIRD PARTY
WITHOUT OUR WRITTEN CONSENT



NEWGATE(Network)LTD
BRUNEL DRIVE, NEWARK, NOTTS NG24 2QE
TEL: 01529 50172 & 796500
FAX: 01529 605400

IF IN
DOUBT -
STOP -
ASK !

Issue

Date

Mod no.

Description

Drawn By

Ref. no

Part name

Material

Dimension

Remark

B
14/05/02
24/01/07
FOUNDATION BASE TO BE CONTINUOUS AND 150mm BELOW GROUND LEVEL
ELECTRO/MAGNETIC LOCK AND SELF CLOSER NOW STANDARD
CONCRETE SPECIFICATION UPDATED

TH
SRM

5/6/00
MC
OUTLINE AND FOUNDATIONS PEDESTRIAN GATE

Scale
1:20

Drawing no.
108/3/17323