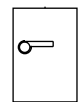
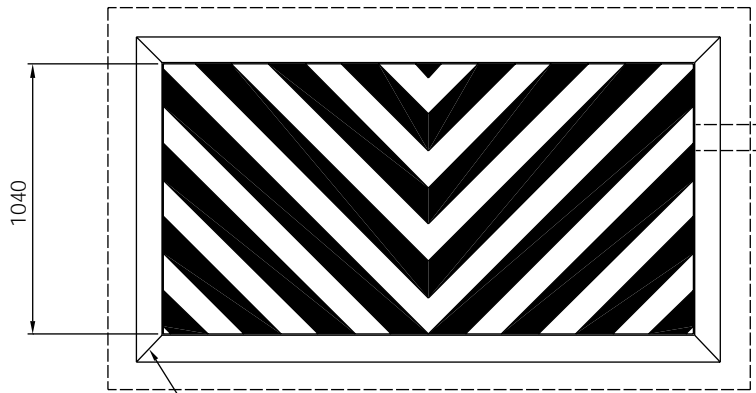


CUSTOMER'S MAINS ISOLATER
OR DISTRIBUTION BOARD
(3Ph / 400V / SEE CHART FOR AMPS).

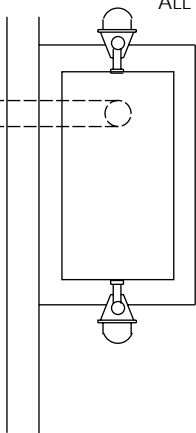


PUSH BUTTON
CONTROL

ALL CABLES (1.5 SQ.mm Min. Multicore XLPE/SWA/PVC)



100 x 70 RSA. KERB ANGLE - SUPPLIED LOOSE FOR
CASTING INTO PIT TO FORM REINFORCED
CORNER - (PAINTED YELLOW)



| KERB SIZE | A | B | C | D | AXLE LOAD | AMP RATING |
|-----------|------|------|-----|-----|-----------|------------|
| 2m x 1m | 2040 | 2070 | 350 | 510 | 3 TONNE | 1.44 |
| 2.5m x 1m | 2540 | 2570 | 350 | 510 | 3 TONNE | 1.90 |

ALL CONCRETE TO BE C30 GRADE (MIN) CAST A MINIMUM
OF 7 DAYS BEFORE INSTALLATION OF KERB

